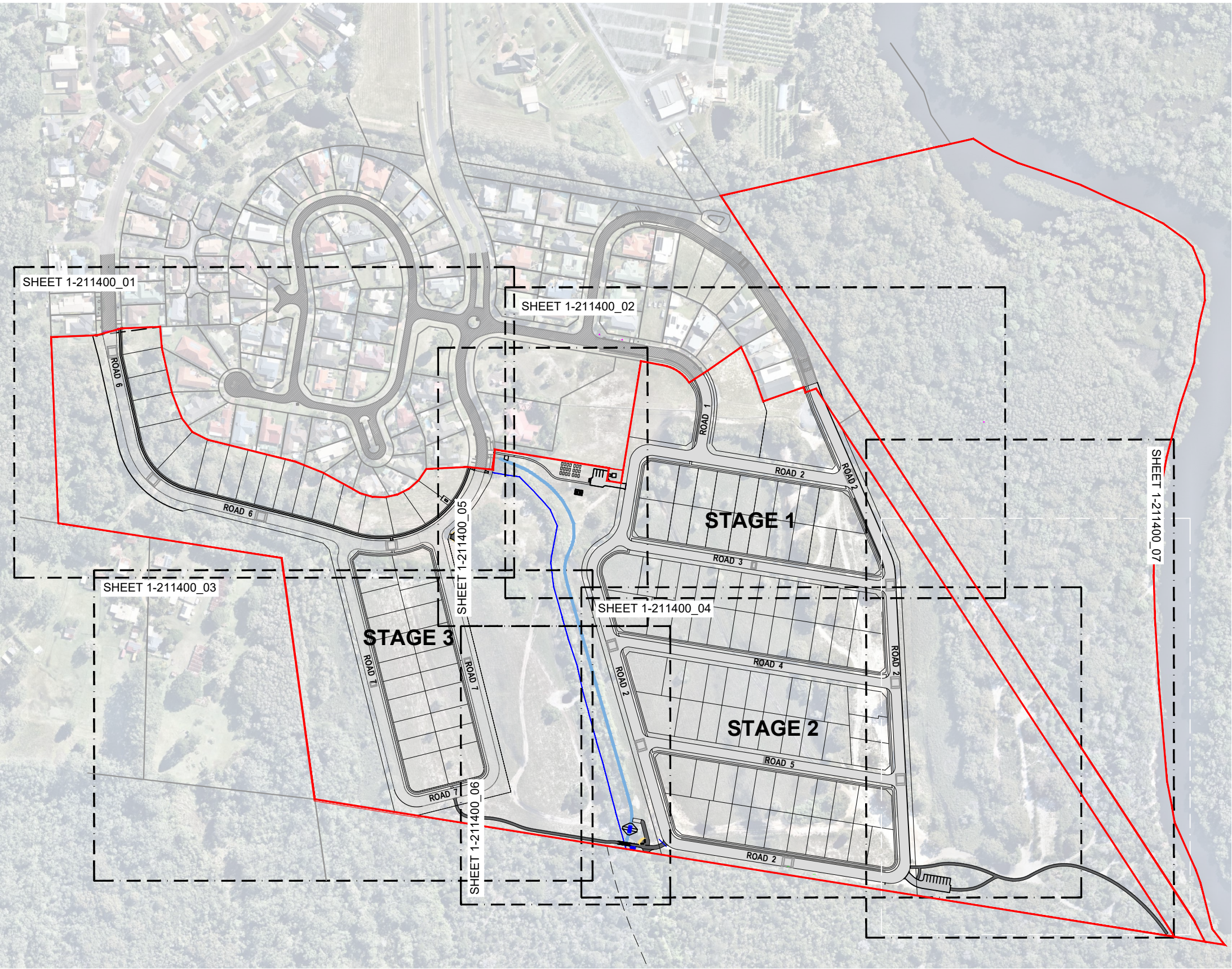


# BAYSIDE BRUNSWICK

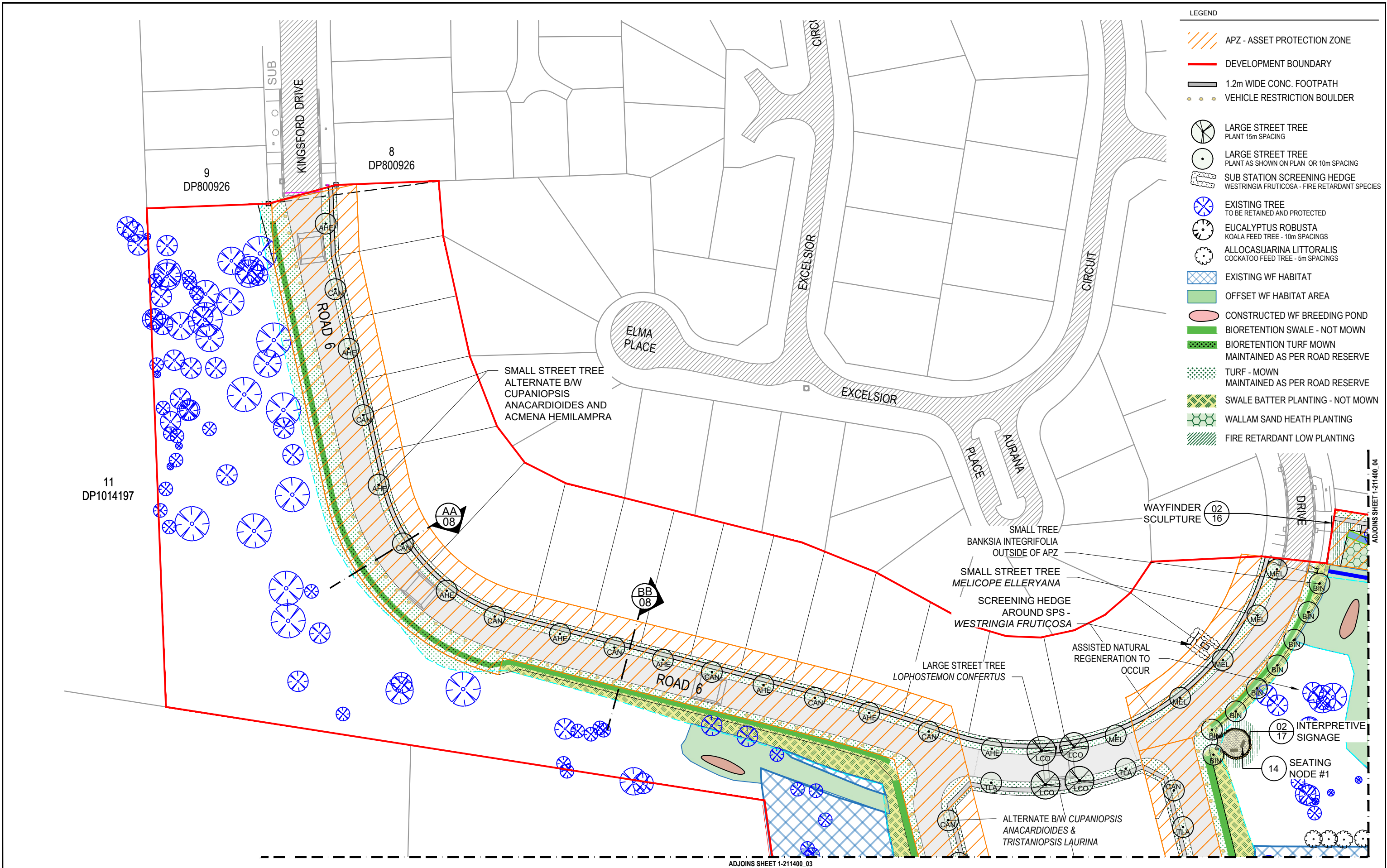
## LANDSCAPE DOCUMENTATION AND HABITAT CREATION DEVELOPMENT APPLICATION

REV D - FOR APPROVAL

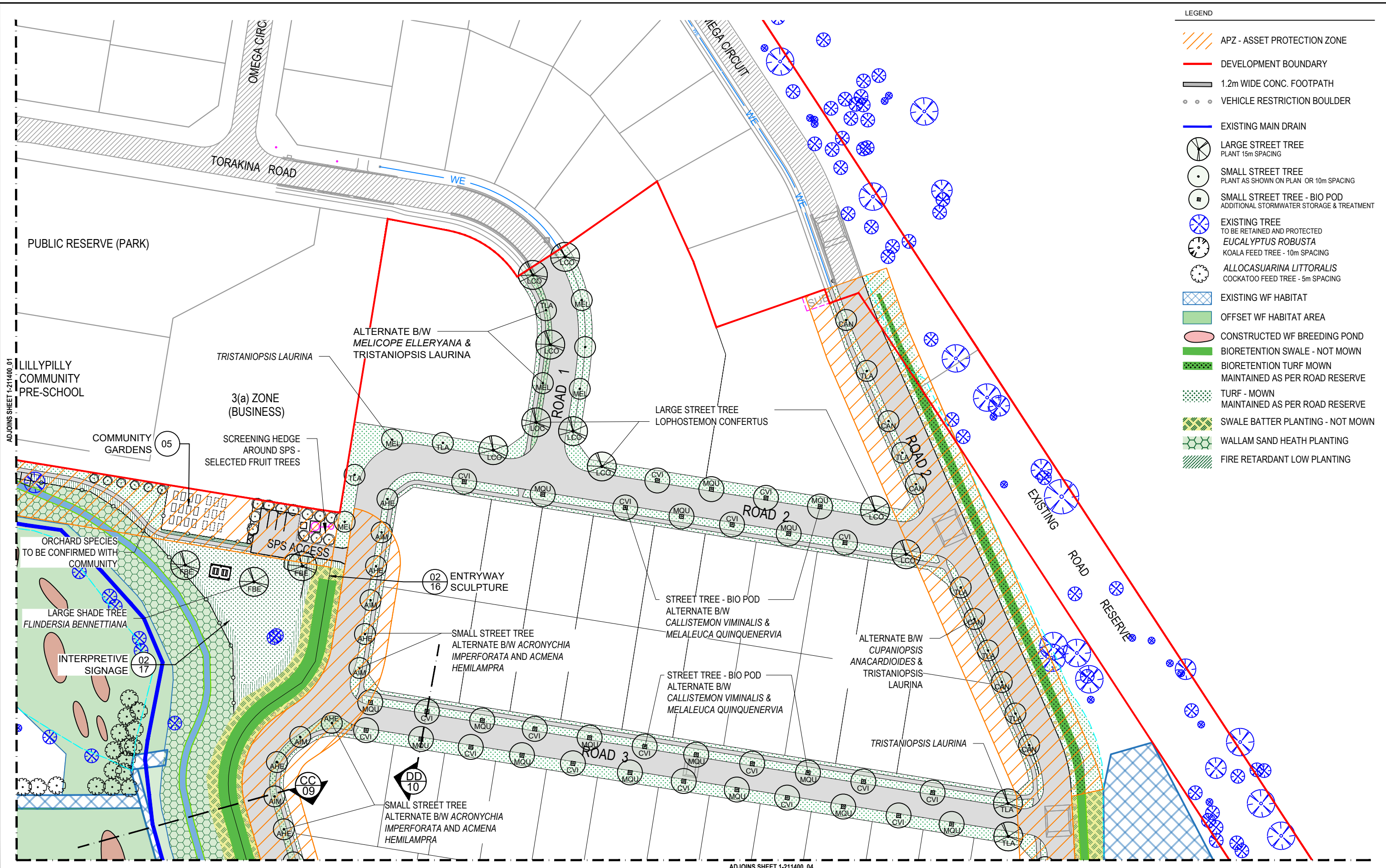
- DRAWING LIST
- 1-211400\_00 - LOCALITY PLAN & DRAWING INDEX
  - 1-211400\_01 - NORTH WEST PLAN
  - 1-211400\_02 - NORTH EAST PLAN
  - 1-211400\_03 - SOUTH WEST PLAN
  - 1-211400\_04 - SOUTH EAST PLAN
  - 1-211400\_05 - COMMUNITY GARDENS
  - 1-211400\_06 - CENTRAL DRAINAGE CORRIDOR  
HABITAT & REHABILITATION ZONE
  - 1-211400\_07 - EASTERN HABITAT & REHAB ZONE
  - 1-211400\_08 - ROAD 6 - SECTIONS AA - BB
  - 1-211400\_09 - ROAD 2 / DRAINAGE CORRIDOR - SEC CC
  - 1-211400\_10 - ROAD 3-5 STREET TREE PIT SEC DD
  - 1-211400\_11 - ROAD 2 - SECTION EE & EAST WEST -  
PEDESTRIAN TRACK
  - 1-211400\_12 -ROAD SECTION GG CREEK  
PEDESTRIAN TRACK
  - 1-211400\_13 - PEDESTRIAN BRIDGE  
SOUTHERN DRAIN CROSSING
  - 1-211400\_14 - SEATING NODES
  - 1-211400\_15 - PLANTING SCHEDULE
  - 1-211400\_16 - INTERPRETIVE SIGNAGE PLAN
  - 1-211400\_17 - INDIGENOUS SCULPTURE PLAN











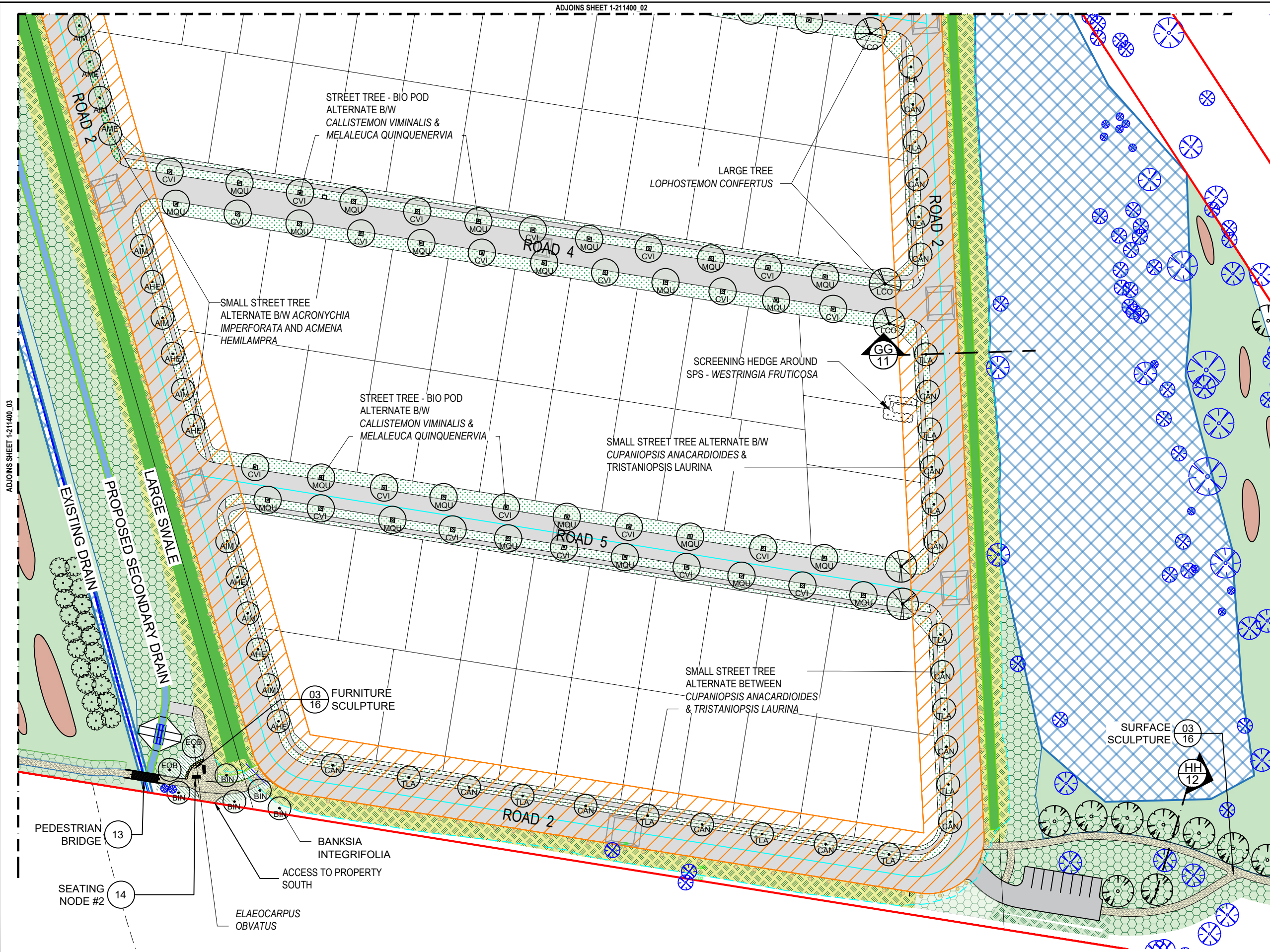
REV.	ISSUE / AMENDMENTS	DATE
A	FOR REVIEW	19.07.21
B	FOR APPROVAL	11.08.21
C	FOR APPROVAL	06.09.21
D	FOR APPROVAL	17.12.21









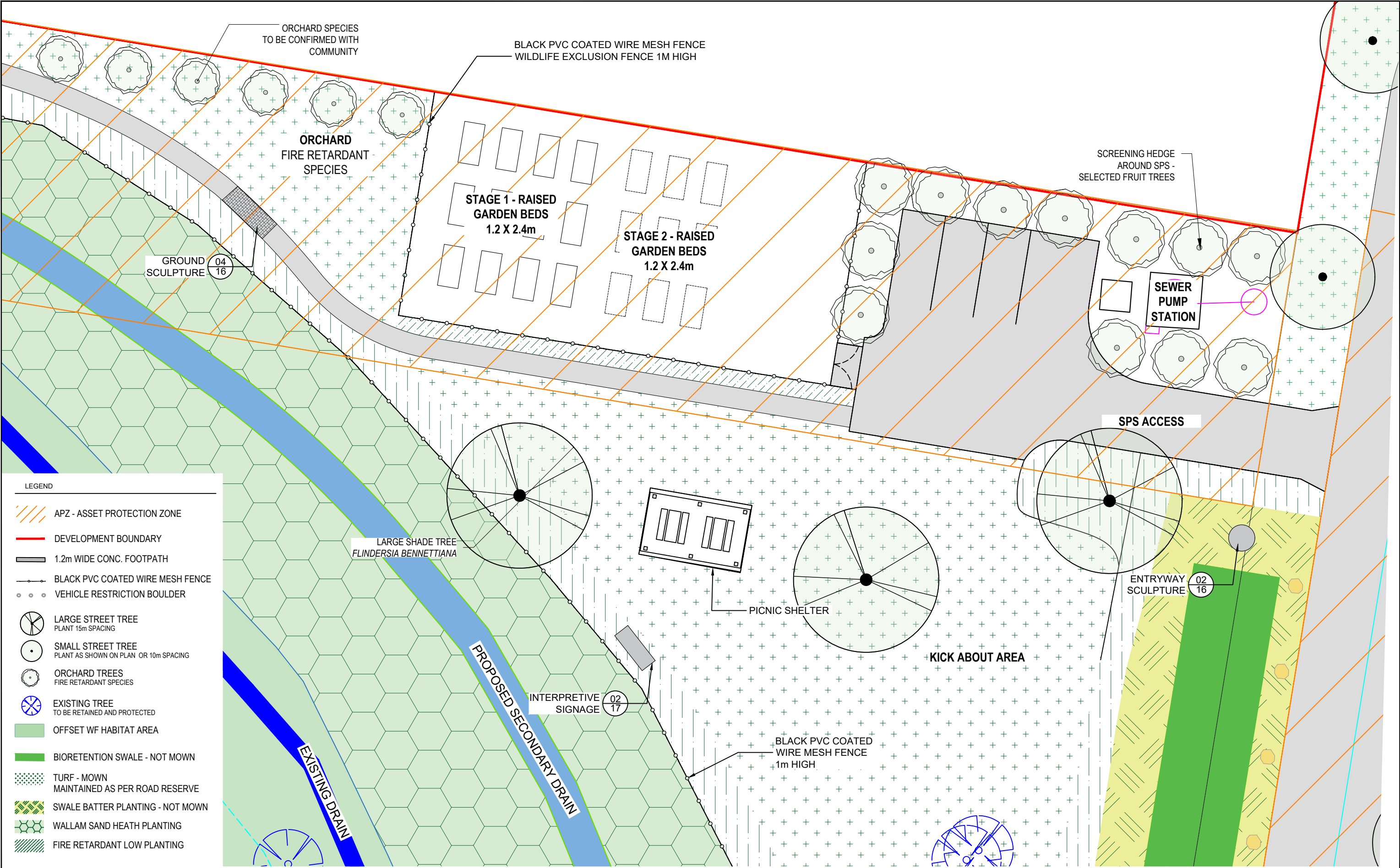


- LEGEND
- APZ - ASSET PROTECTION ZONE
  - DEVELOPMENT BOUNDARY
  - 1.2m WIDE CONC. FOOTPATH
  - 2.0m DECO SAND. FOOTPATH
  - 2.0 X 7.0m PEDESTRIAN BRIDGE
  - VEHICLE RESTRICTION BOULDER
  - LARGE STREET TREE  
PLANT 15m SPACING
  - SMALL STREET TREE  
PLANT AS SHOWN ON PLAN OR 10m SPACING
  - SMALL STREET TREE - BIO POD  
ADDITIONAL STORMWATER STORAGE & TREATMENT
  - SUB STATION SCREENING HEDGE  
WESTRINGIA FRUTICOSA - FIRE RETARDANT SPECIES
  - EXISTING TREE  
TO BE RETAINED AND PROTECTED
  - EUCALYPTUS ROBUSTA  
KOALA FEED TREE - 10m SPACINGS
  - ALLOCASUARINA LITTORALIS  
COCKATOO FEED TREE - 5m SPACINGS
  - EXISTING WF HABITAT
  - OFFSET WF HABITAT AREA
  - CONSTRUCTED WF BREEDING POND
  - BIORETENTION SWALE - NOT MOWN
  - TURF - MOWN  
MAINTAINED AS PER ROAD RESERVE
  - SWALE BATTER PLANTING - NOT MOWN
  - WALLAM SAND HEATH PLANTING
  - FIRE RETARDANT LOW PLANTING

REV.	ISSUE / AMENDMENTS	DATE
A	FOR REVIEW	19.07.21
B	FOR APPROVAL	11.08.21
C	FOR APPROVAL	06.09.21
D	FOR APPROVAL	17.12.21







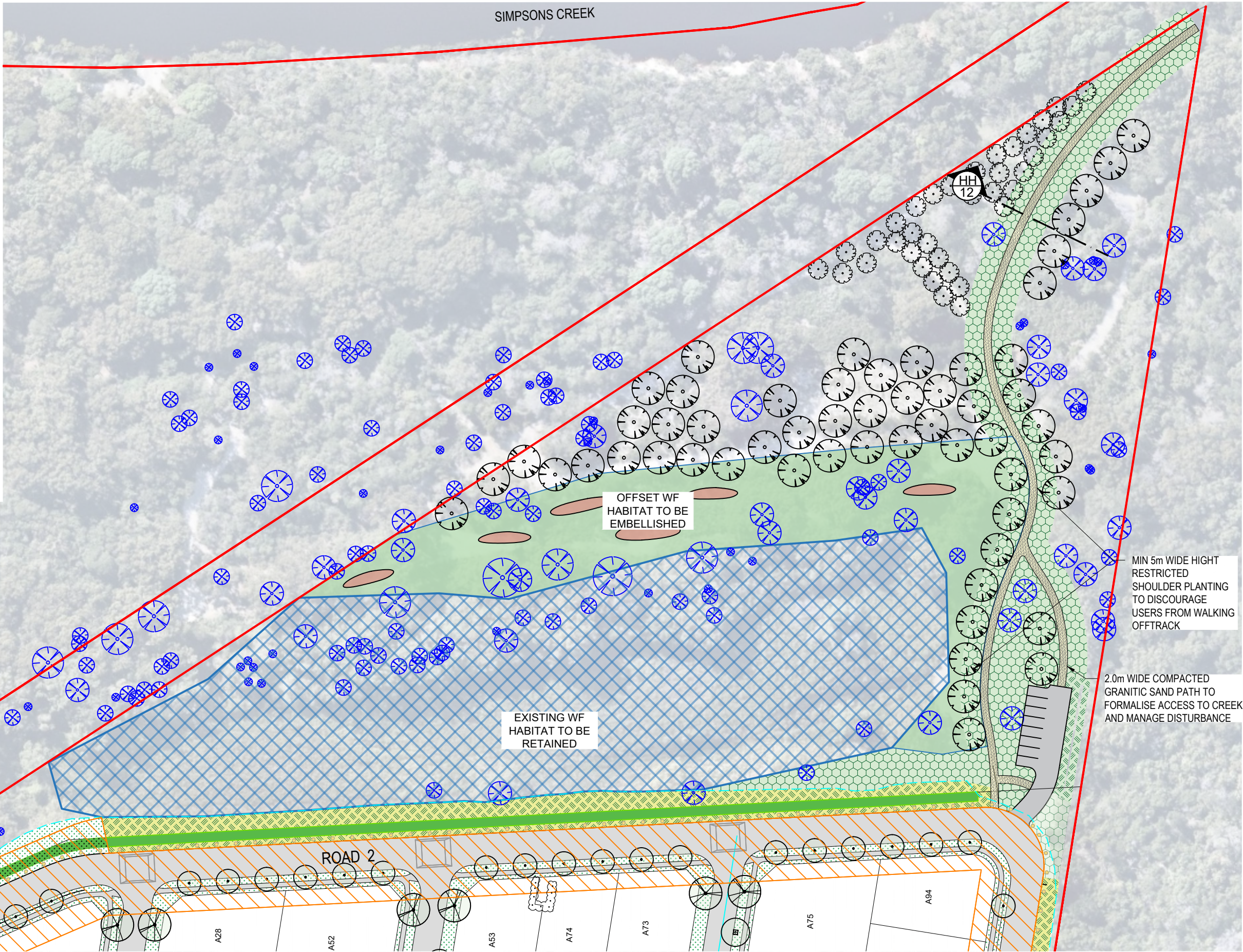






LEGEND

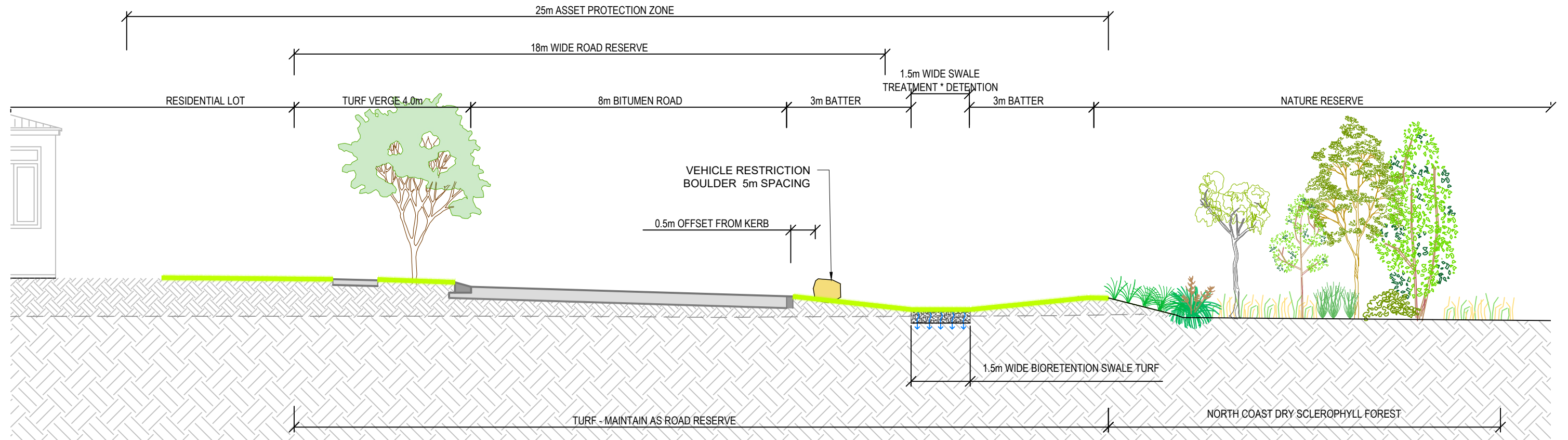
- APZ - ASSET PROTECTION ZONE
- DEVELOPMENT BOUNDARY
- 2.0m DECO GRANITIC SAND FOOTPATH
- EXISTING WF HABITAT
- OFFSET WF HABITAT AREA
- BIORETENTION SWALE MOWN  
MAINTAINED AS PER ROAD RESERVE
- BIORETENTION SWALE - NOT MOWN
- TURF - MOWN  
MAINTAINED AS PER ROAD RESERVE
- SWALE BATTER PLANTING - NOT MOWN
- WALLAM SAND HEATH PLANTING
- FIRE RETARDANT LOW PLANTING
- CONSTRUCTED WF BREEDING POND
- EXISTING TREES TO BE RETAINED
- EUCALYPTUS ROBUSTA* QTY = 56 of 56 total  
KOALA FEED TREE - 10m SPACING
- ALLOCASUARINA LITTORALIS* QTY = 37 of 78 total  
COCKATOO FEED TREE - 5m SPACING
- LARGE STREET TREE  
PLANT AS SHOWN ON PLAN OR 10m SPACING
- SMALL STREET TREE  
PLANT AS SHOWN ON PLAN OR 10m SPACING



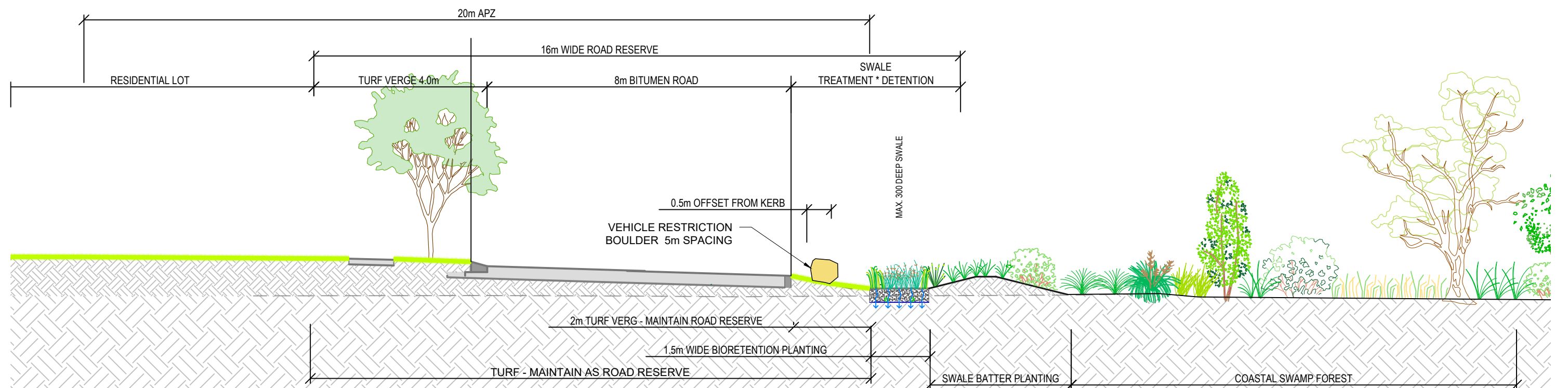
REV.	ISSUE / AMENDMENTS	DATE
A	FOR REVIEW	19.07.21
B	FOR APPROVAL	11.08.21
C	FOR APPROVAL	06.09.21
D	FOR APPROVAL	17.12.21





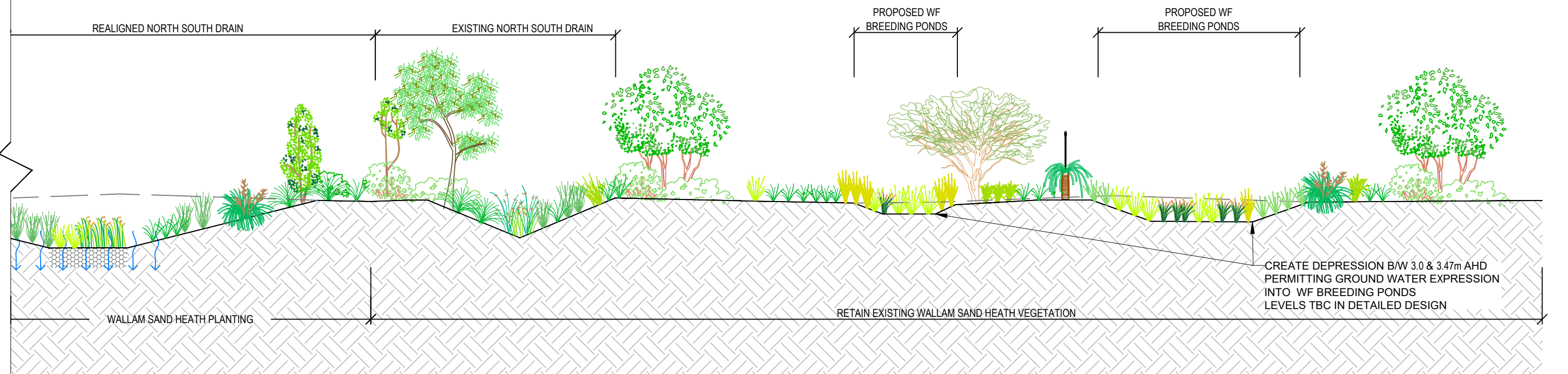
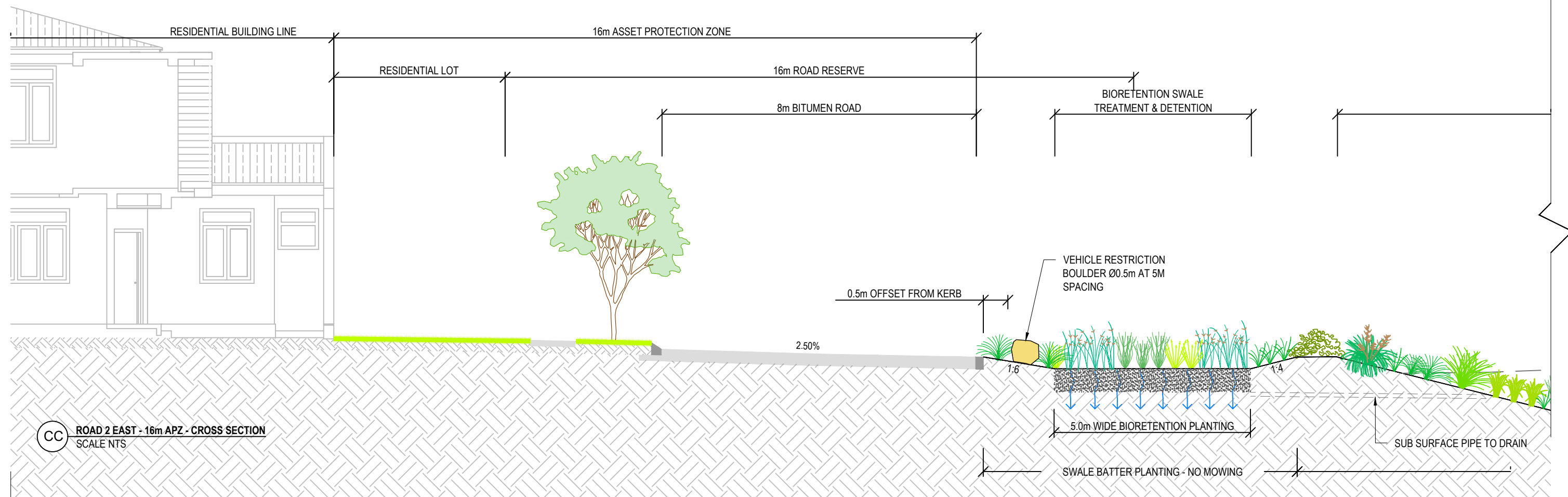


AA ROAD 6 - 25m APZ - CROSS SECTION  
SCALE 1:100

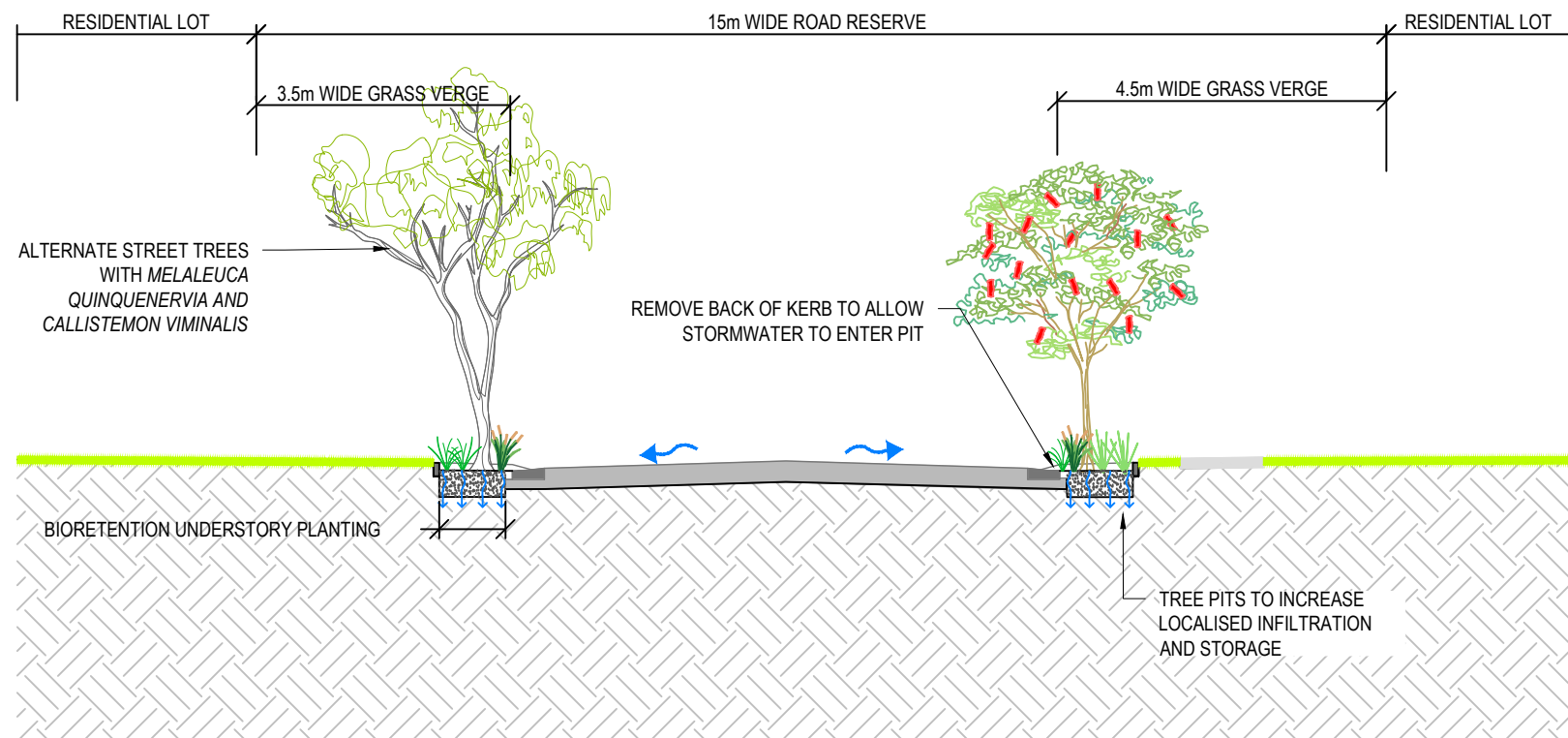


BB ROAD 6 - 18m APZ - CROSS SECTION  
SCALE 1:50

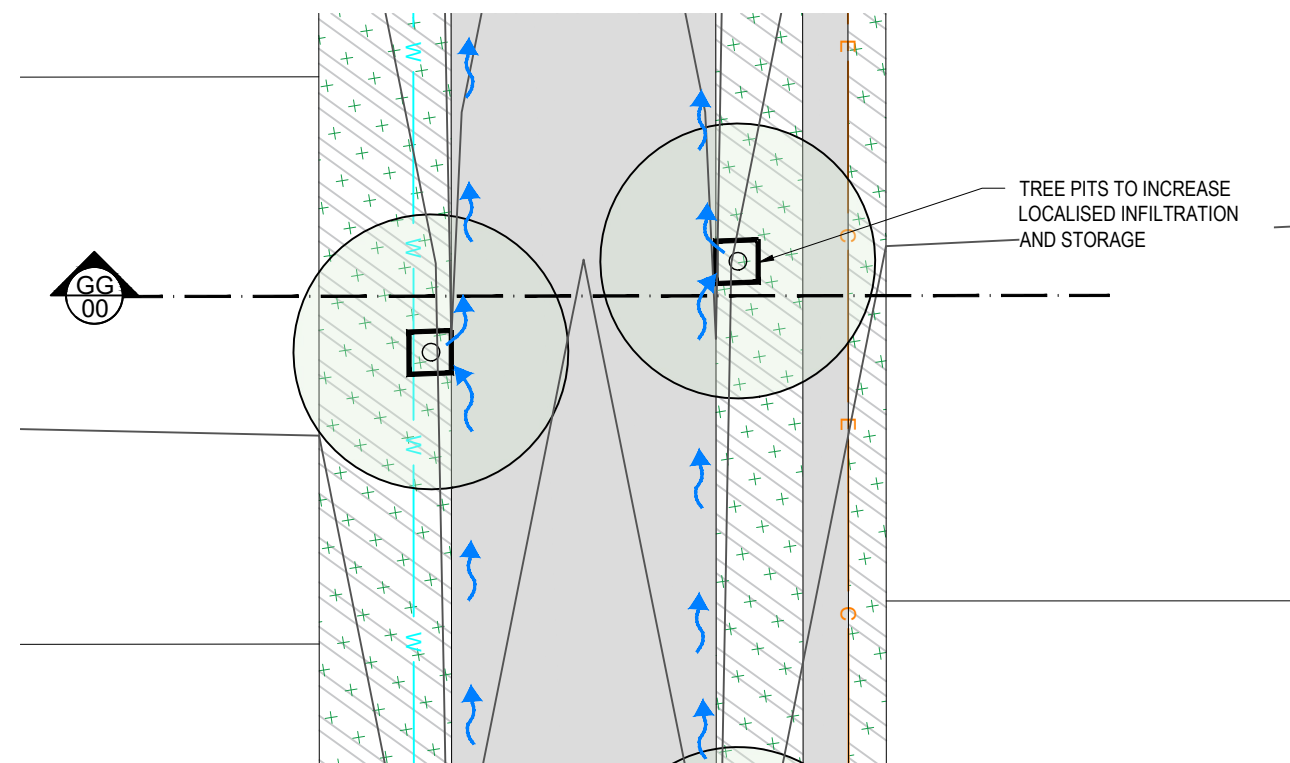




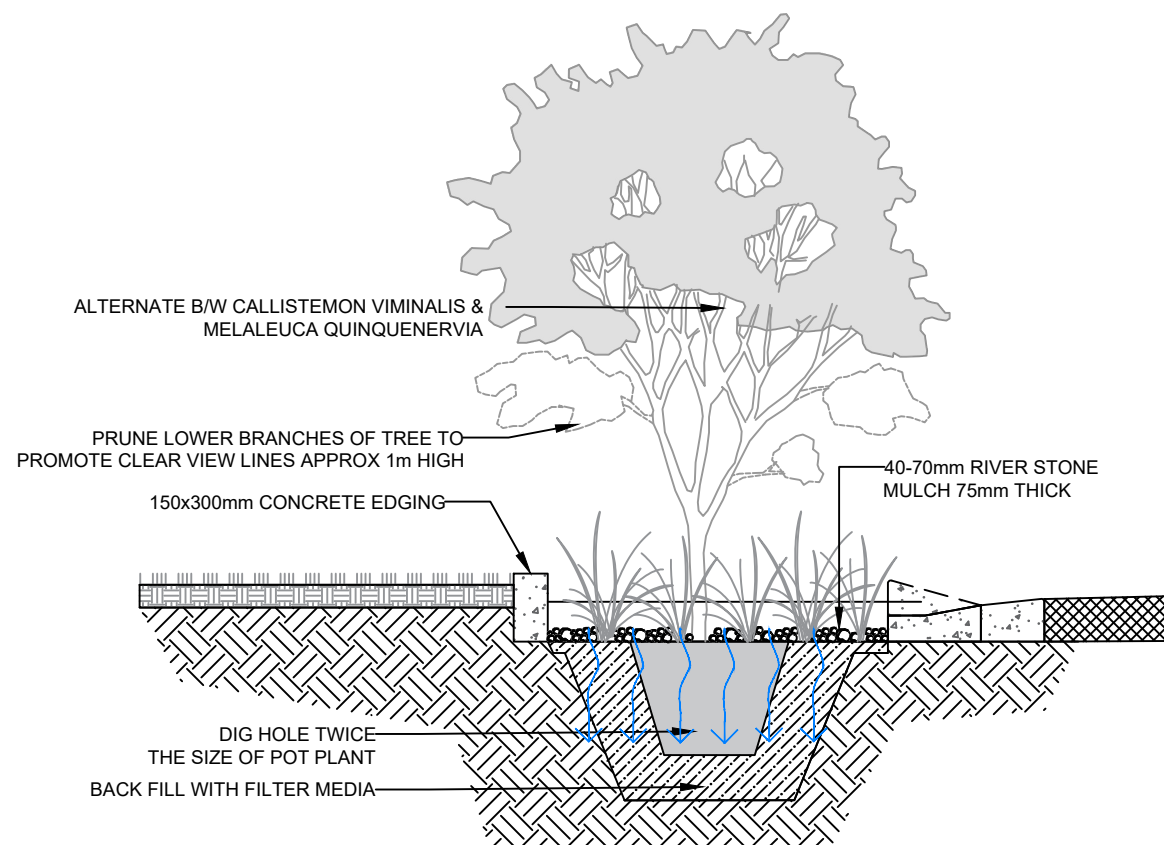




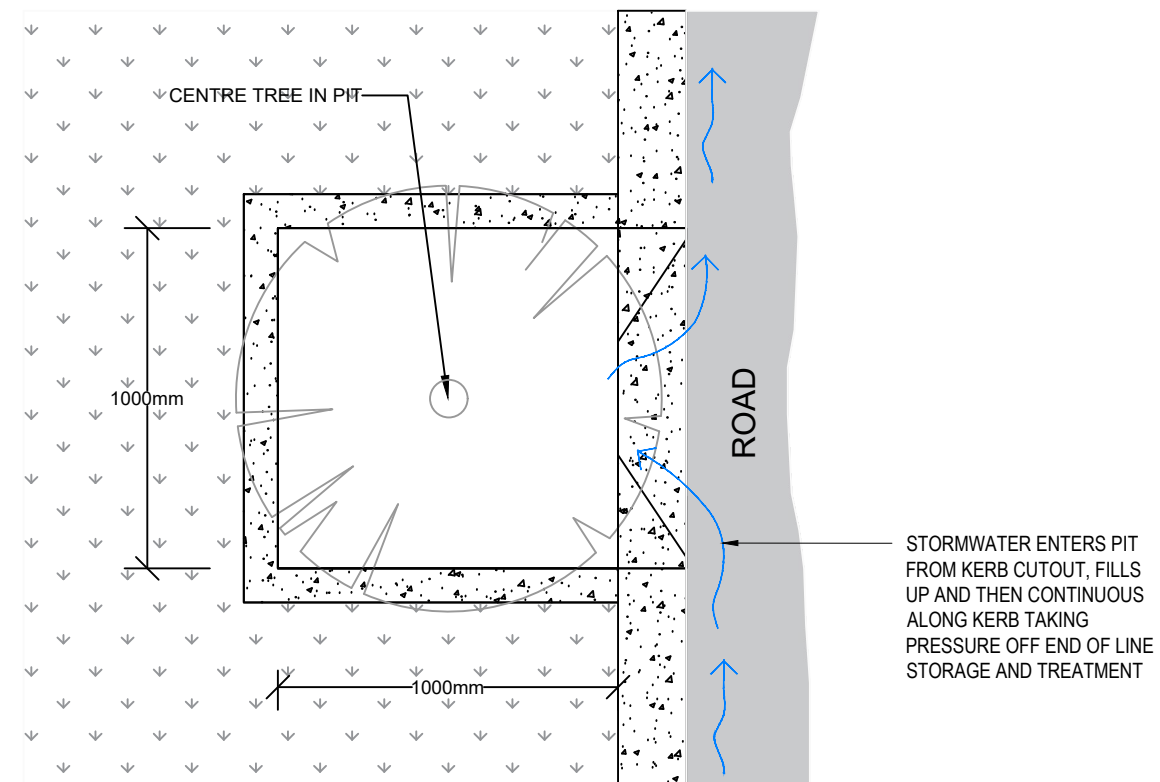
DD ROAD 2-5 - STREET TREE - TREE PITS -CROSS SECTION  
SCALE 1:100



ROAD 2-5 - STREET TREE - TREE PITS - PLAN  
SCALE 1:200

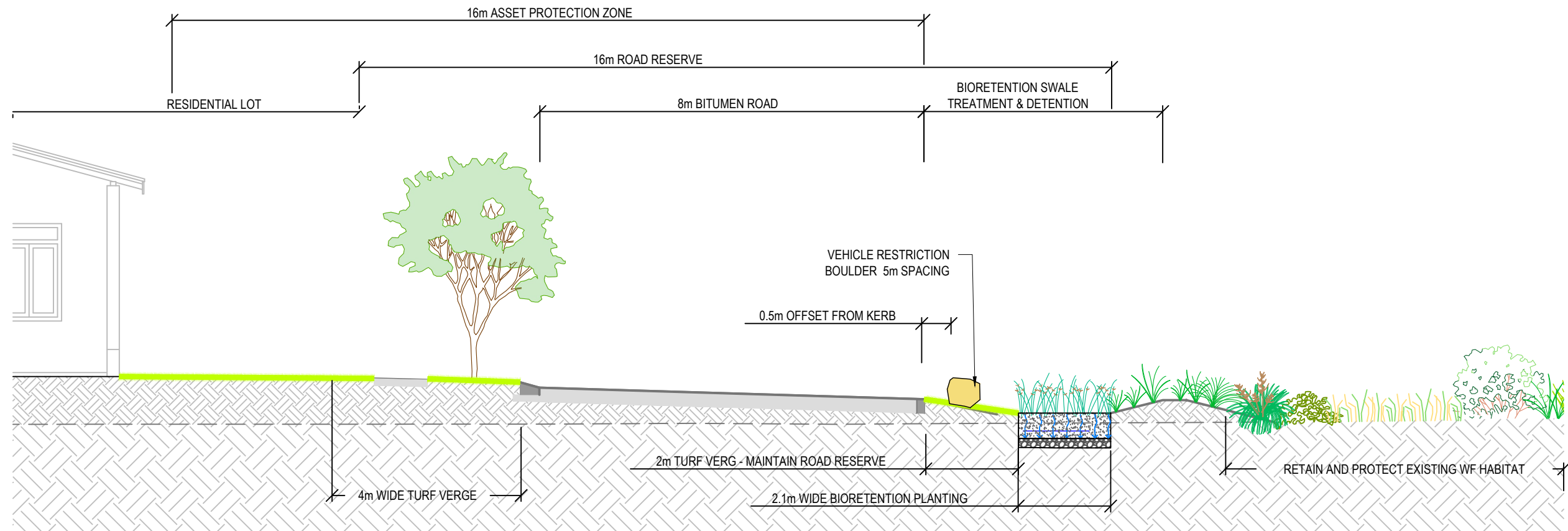


TREE PIT BIO POD - DETAIL CROSS SECTION  
SCALE: NTS

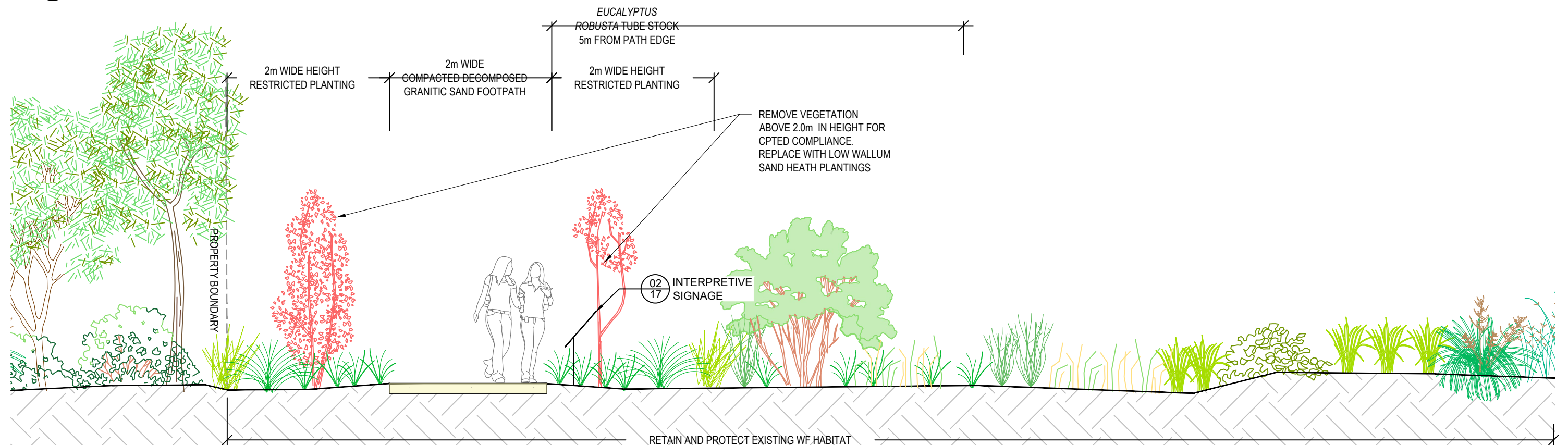


TREE PIT BIO POD - DETAIL PLAN  
SCALE: NTS



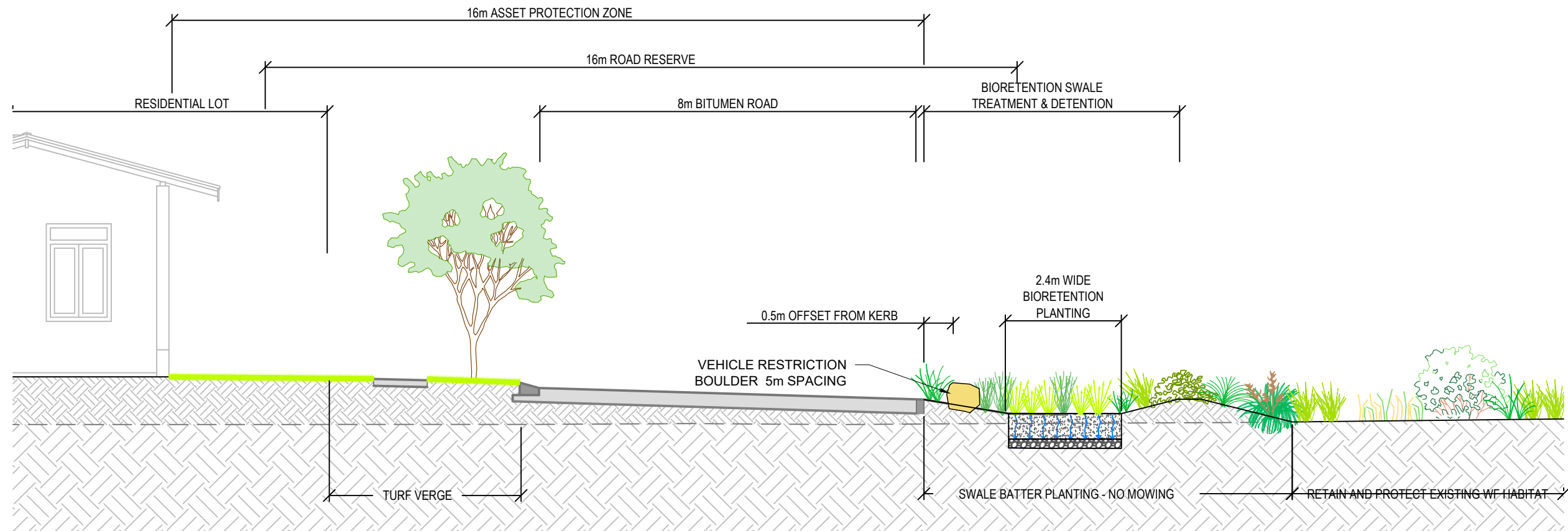


EE ROAD 7 - 16m APZ - CROSS SECTION  
SCALE 1:100

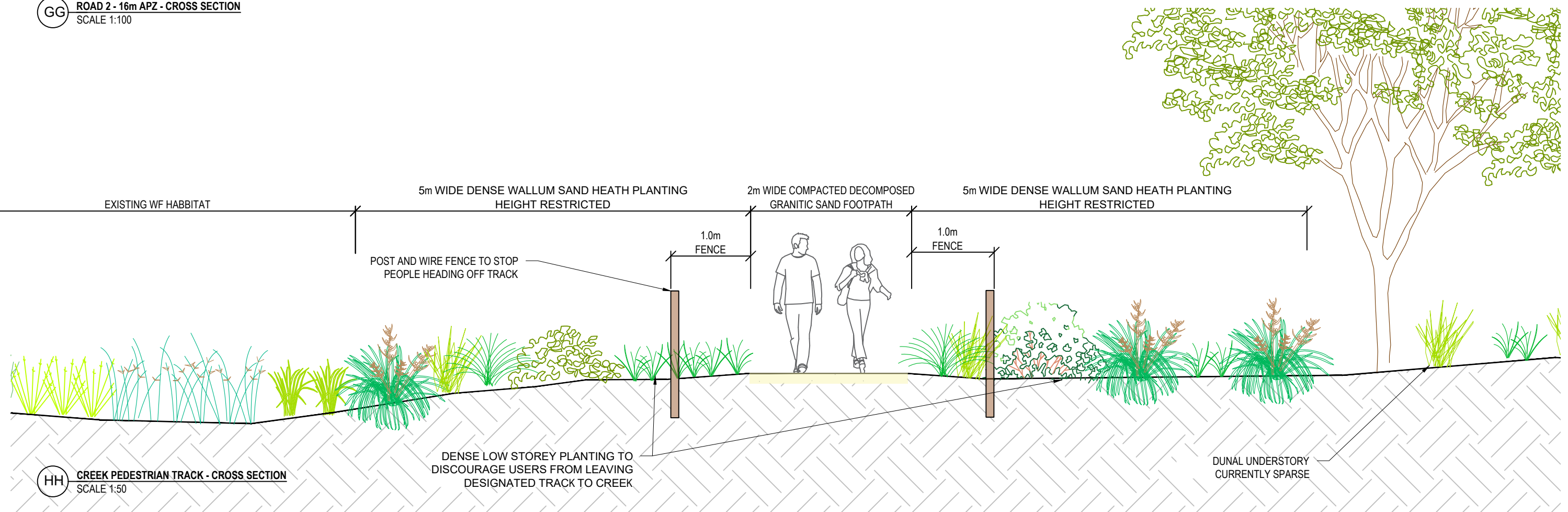


FF EAST WEST - PEDESTRIAN TRACK 2m WIDE  
SCALE 1:100



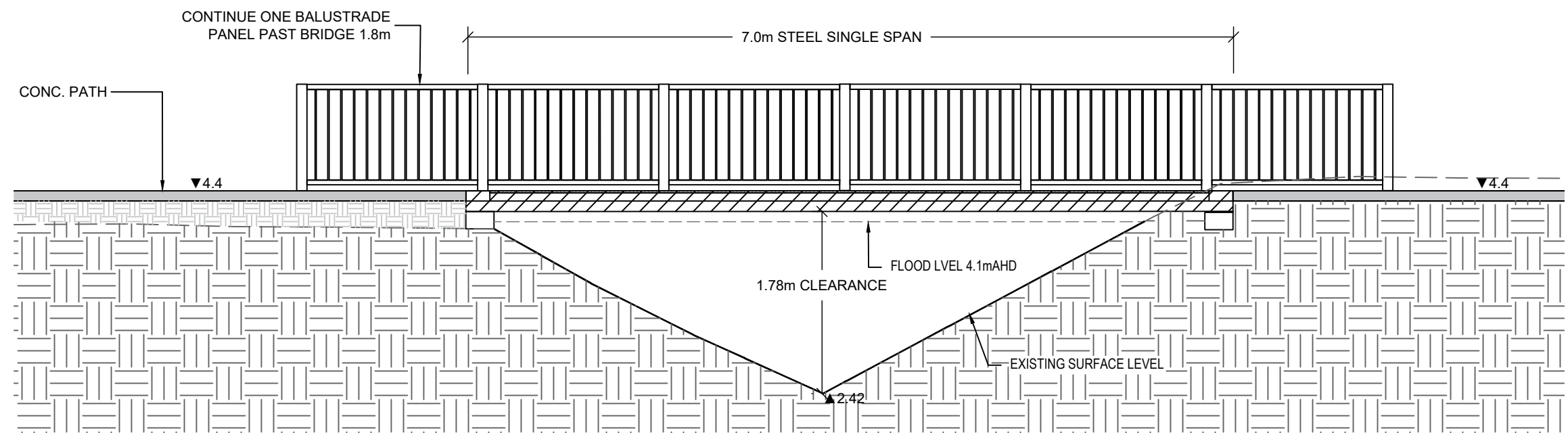


GG ROAD 2 - 16m APZ - CROSS SECTION  
SCALE 1:100

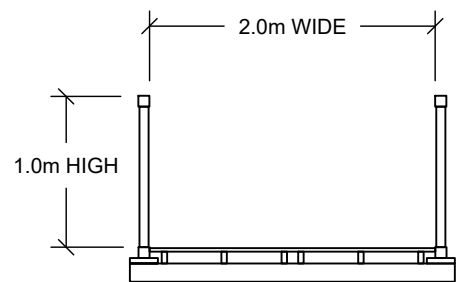


HH CREEK PEDESTRIAN TRACK - CROSS SECTION  
SCALE 1:50

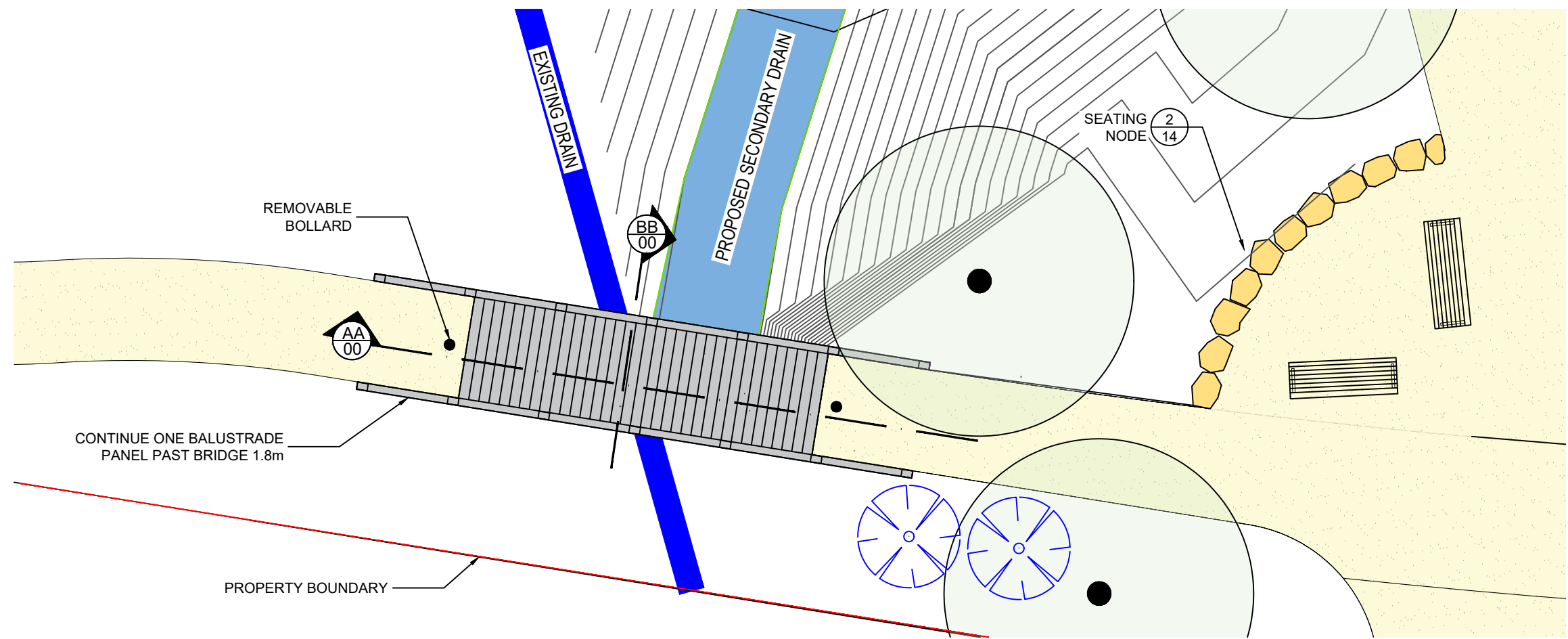




**AA 13 PEDESTRIAN BRIDGE - ELEVATION**  
SCALE 1:50



**BB 13 PEDESTRIAN BRIDGE - CROSS SECTION**  
SCALE 1:50



**PEDESTRIAN BRIDGE - ELEVATION**  
SCALE 1:100



CONDAMINE BRIDGE - PRECEDENT IMAGE

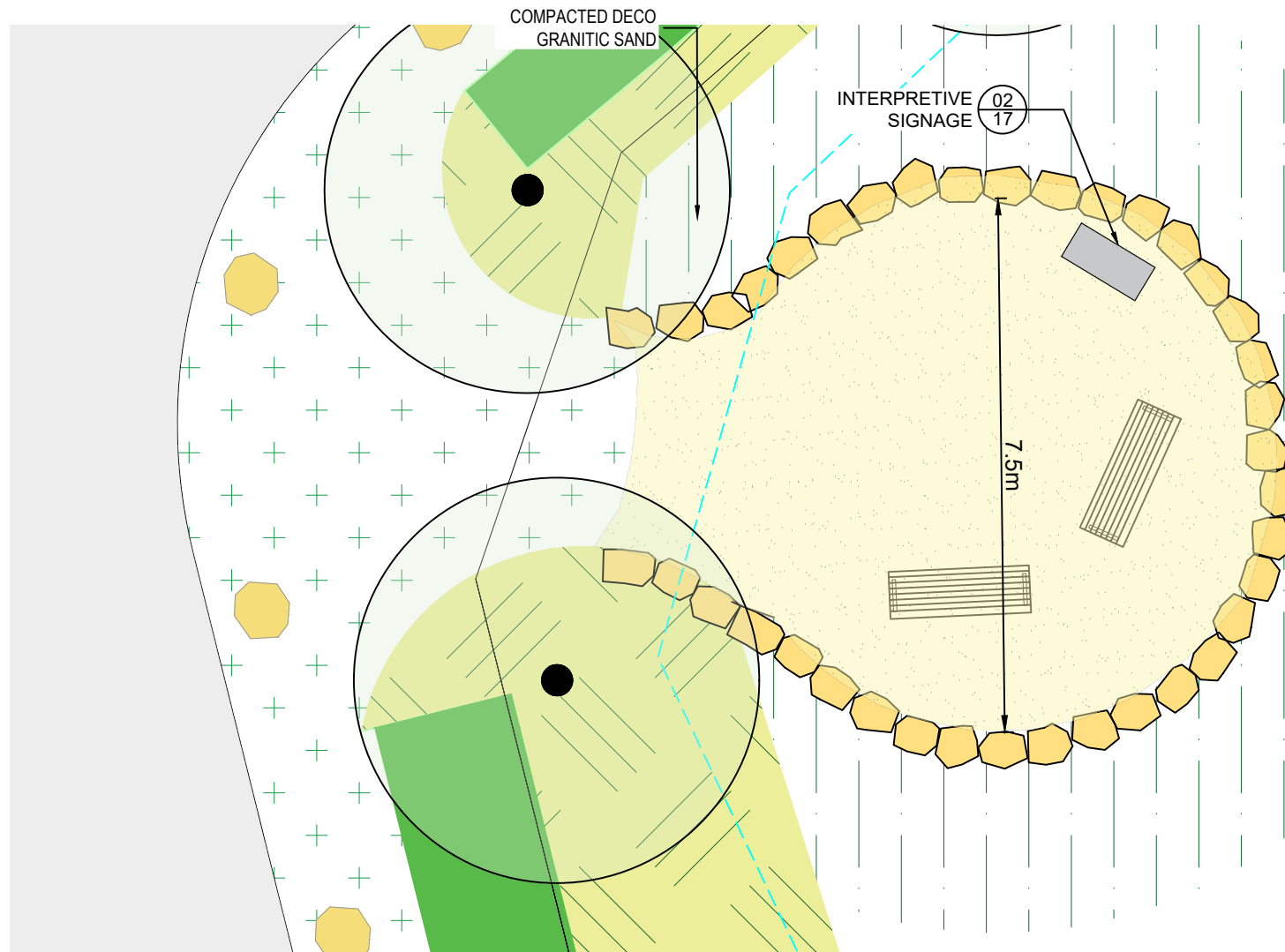
- BRIDGE SPECIFICATION**
- CONDAMINE BY LANDMARK PRODUCTS PTY LTD
  - 2M WIDE 7M LONG
  - LOADING 3kPa (PEDESTRIAN USE ONLY)
  - FLAT SINGLE SPAN
  - POWDERCOATED DULUX 'SATIN BLACK'
  - COMPOSITE TIMBER DECKING

REV.	ISSUE / AMENDMENTS	DATE
A	FOR REVIEW	19.07.21
B	FOR APPROVAL	11.08.21
C	FOR APPROVAL	06.09.21
D	FOR APPROVAL	17.12.21

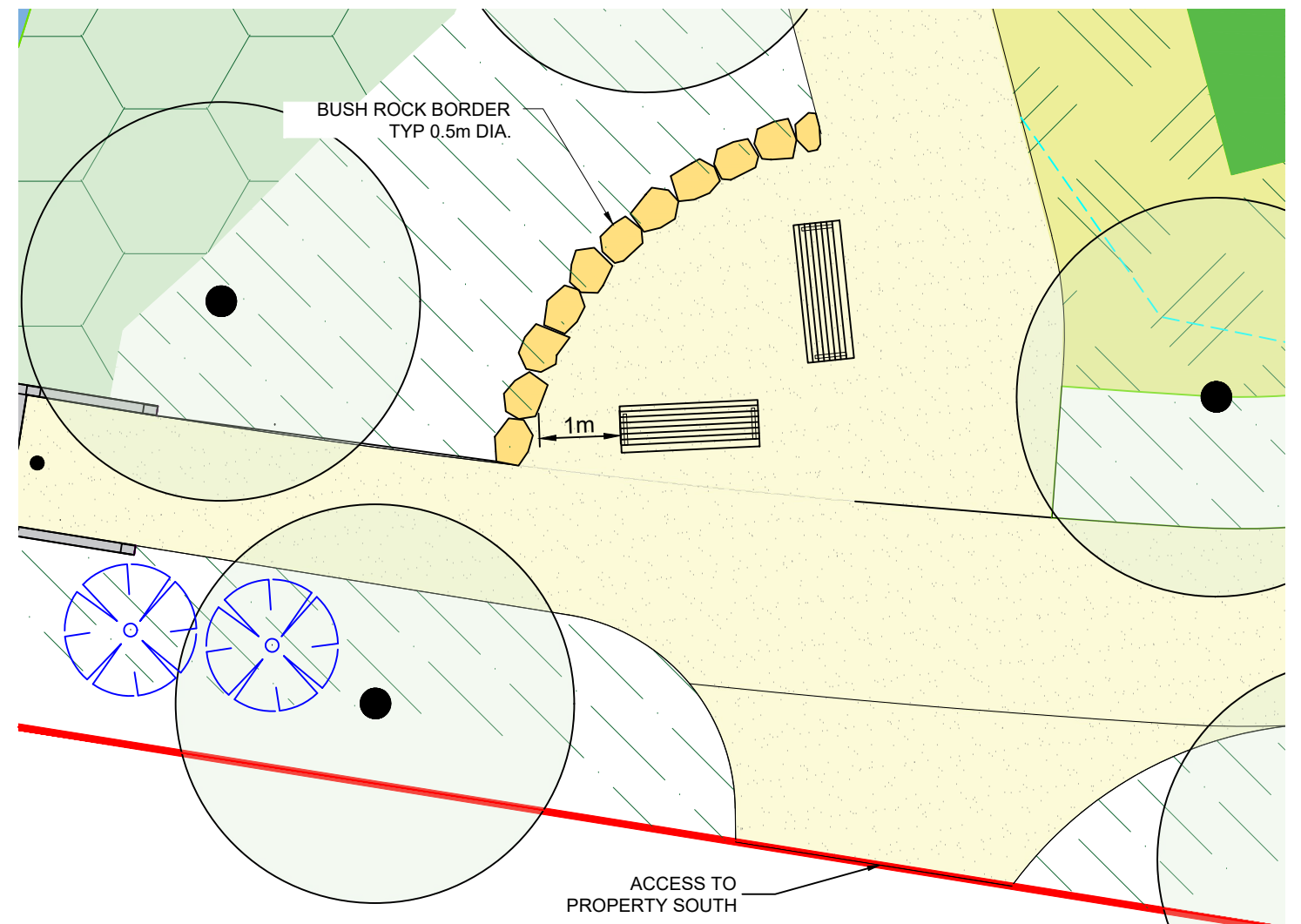


SCALE		REV. <b>D</b>
DESIGNED	DM/SS	CAD FILE No. <b>1-211400_BAYSIDE_LD</b> DWG No. <b>1-211400_BAYSIDE_LD_13</b>
DRAWN	SS	
CHECKED	DM	

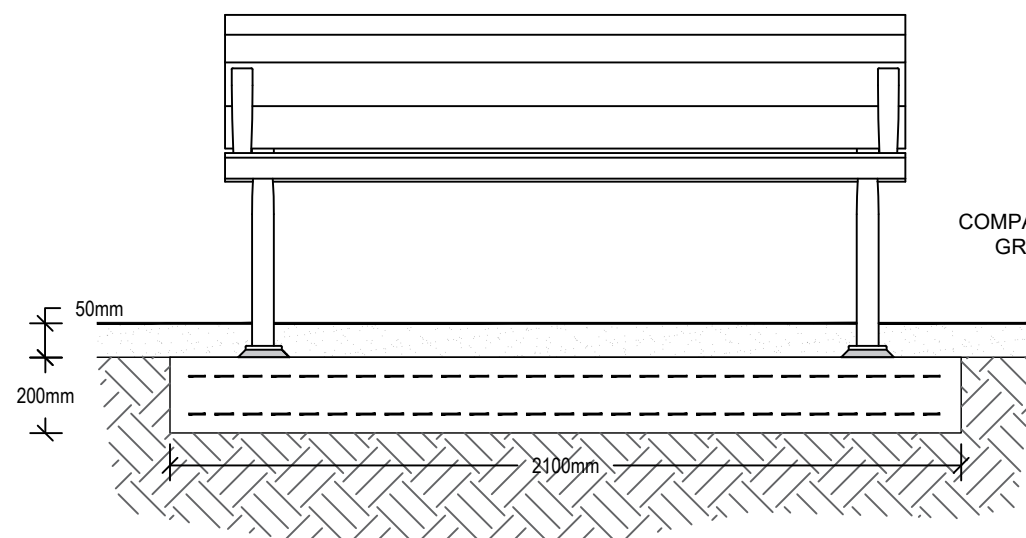




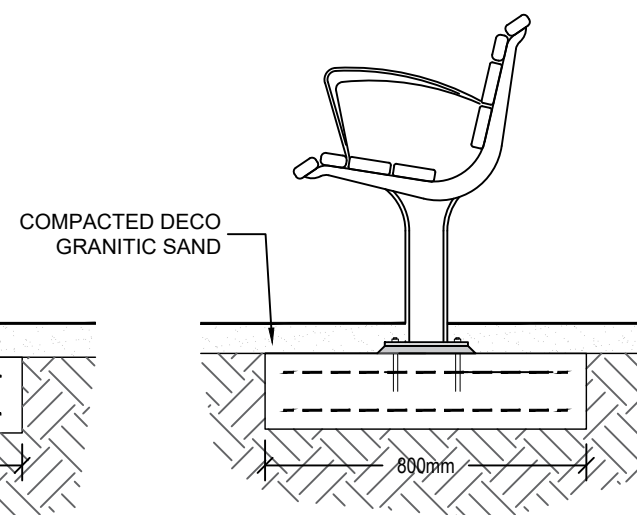
01 SEATING NODE #1  
14 SCALE 1:100



02 SEATING NODE #2  
14 SCALE 1:100



03 PARK SEAT - ELAVATION  
14 SCALE 1:50



04 PARK SEAT - CROSS SECTION  
14 SCALE 1:50

#### BENCH SEAT - PRECEDENT IMAGE

SEAT SPECIFICATION  
 TYPE: 'COURTYARD SEAT' DDA VERSION, (520 HIGH)  
 BATTERN TYPE: AUSTRALIAN HARDOOD TIMBER BATTERNS  
 BATTERN FINISH: QUILITY OUTDOOR TIMBER OIL  
 ARMREST: 2 X POWDERCOATED DULUX 'SATIN BLACK'  
 LEG TYPE: FLANGE MOUNT (SUB SURFACE MOUNTED)  
 FRAME FINISH: POWDERCOAT DULUX 'SATIN BLACK'





WALLUM FROGLET HABITAT PLANTING ZONE						
Scientific name	Common name	Type	Pot Size	Density/m²	% Prop	QTY
<i>Baloskion pallens</i>	Bog Rush	G	Hiko	4	10	
<i>Baloskion tetraphyllum subsp. meiotachyum</i>	Plume Rush	G	Hiko	4	10	
<i>Baumea rubiginosa</i>	Slender twig rush	G	Hiko	4	10	
<i>Blechnum indicum</i>	Water Fern	G	Hiko	4	10	
<i>Callistemon pachyphyllus</i>	Wallum Bottlebrush	S	Tube	4	10	
<i>Gahnia clarkei</i>	Saw-sedge	G	Hiko	4	10	
<i>Boronia falcifolia</i>	Wallum Boronia	S	Hiko	4	10	
<i>Leptospermum liversidgei</i>	Wallum Tea-tree	S	Tube	4	10	
<i>Melastoma affine</i>	Blue-tongue	G	Hiko	4	10	
<i>Schoenus brevifolius</i>	Zig-zag bog rush	G	Hiko	4	10	
				TOTAL	100	
Distribution of plants should in clumps of 5-10 plants of the same species to ensure propagation can readily occur						
Shrubs to be planted top half of batter not on basin floor. Plant in clumps of 3 or 5						

WALLUM SAND HEATH - PLANTING ZONE - UPPER BATTER						
	Common name	Type	Pot Size	Density/m²	% Prop	QTY
<i>Baloskion tetraphyllum subsp. meiotachyum</i>	Plume Rush	S	Tube	2	30	
<i>Blechnum indicum</i>	Water Fern	S	Tube	4	30	
<i>Schoenus brevifolius</i>	Zig-zag bog rush	S T	Tube	4	40	
				TOTAL	100	

WALLUM SAND HEATH - PLANTING ZONE - TOE OF BATTER						
	Common name	Type	Pot Size	Density/m²	% Prop	QTY
<i>Baloskion tetraphyllum subsp. meiotachyum</i>	Plume Rush	G	Hiko	4	25	
<i>Baumea rubiginosa</i>	Twig-rush	G	Hiko	4	25	
<i>Baumea articulata</i>	Jointed Twig-rush	G	Hiko	4	25	
<i>Lepironia articulata</i>	Grey Rush	G	Hiko	4	25	
				TOTAL	100	

WALLUM SAND HEATH - DRAIN PLANTING ZONE - TOP OF BATTER							
Scientific name	Common name	Type	Pot Size	Density/m²	% Prop	QTY	
<i>Acacia ulicifolia</i>	Prickly Moses	S	Tube	4	3		
<i>Acacia suaveolens</i>	Sweet Wattle	S	Tube	4	3		
<i>Acronychia imperforata</i>	Beach Acronychia	S T	Tube	4	1		
<i>Allocasuarina littoralis</i>	Black She-oak	S	Tube	4	3		
<i>Aotus ericoides</i>	Golden Pea	S	Hiko	4	3		
<i>Aotus lanigera</i>	Hairy Aotus	S	Tube	4	3		
<i>Austromyrtus dulcis</i>	Midyim	S	Tube	4	4		
<i>Baeckea frutescens</i>	Weeping Baeckea	S	Tube	4	3		
<i>Banksia aemula</i>	Wallum Banksia	S	Tube	4	4		
<i>Banksia ericifolia subsp. ericifolia</i>	Heath-leaved Banksia	S	Tube	4	3		
<i>Banksia integrifolia subsp. Integrifolia</i>	Coast Banksia	S	Tube	4	3		
<i>Cupaniopsis anacardioides</i>	Tuckeroo	S T	Tube	4	1		
<i>Dianella caerulea</i>	Flax Lily	G	Hiko	4	20		
<i>Elaeocarpus reticulatus</i>	Blueberry Ash	S T	Tube	4	1		
<i>Gahnia clarkei</i>	Saw-sedge	G	Hiko	4	20		
<i>Leucopogon parviflorus</i>	Beard Heath	S	Tube	4	2		
<i>Leptospermum trinervium</i>	Slender Tea-tree	S T	Tube	4	1		
<i>Lomandra longifolia</i>	Mat-rush	G	Hiko	4	20		
<i>Melaleuca quinquenervia</i>	Broad-leaved Paperbark	T	Tube	4	1		
<i>Persoonia stradbokensis</i>	Geebung	S T	Tube	4	1		
				TOTAL	100		
Tree species should be used sparingly and be spaced around 15m							

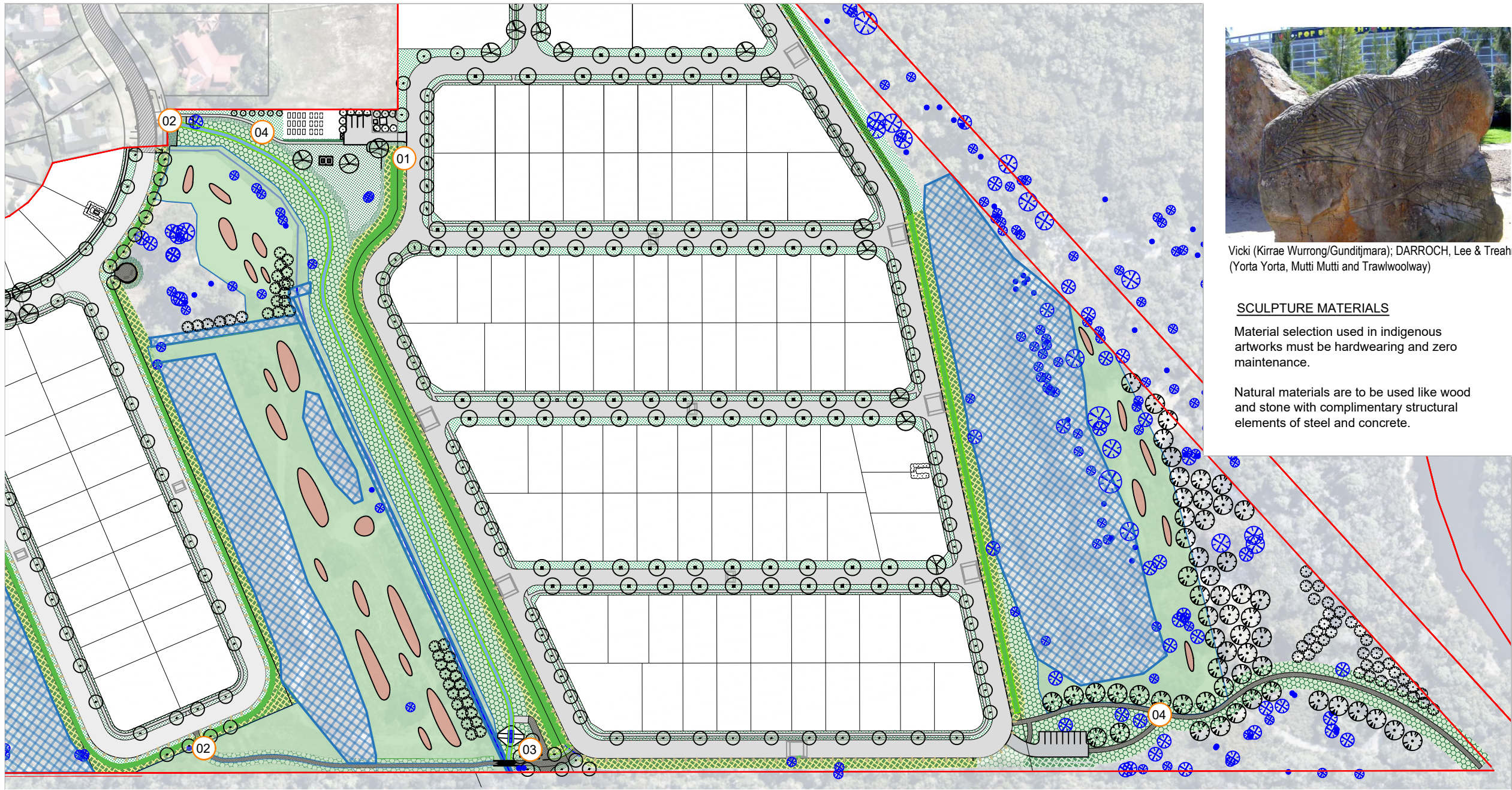
STREET TREE PLANTING							
Scientific name	Common name	CODE	Pot Size	Height m	Spread m	QTY	
<i>Acmena hemilampra*</i>	Broad Leaf Lily Pilly	AHE	45L	4 - 6m	2 - 3m		
<i>Acronychia imperforata*</i>	Beach Acronychia	AIM	45L	5 - 8m	3 - 4m		
<i>Banksia integrifolia</i>	Coastle banksia	BIN	45L	4 -15m	1-6m		
<i>Cupaniopsis anacardioides*</i>	Tuckeroo	CAN	45L	8 - 15m	3 - 5m		
<i>Callistemon viminalis</i>	Weeping Bottlebrush	CVI	45L	4 - 6m	3 - 4m		
<i>Elaeocarpus obovatus</i>	Blueberry Ash	ERE	45L	10 - 25m	4 - 10m		
<i>Flindersia bennettiana</i>	Bennetts Ash	FBE	45L	10 - 30m	10 - 15m		
<i>Lophostemon confertus</i>	Brush Box	LCO	45L	10 - 15m	5 -15m		
<i>Melaleuca quinquenervia</i>	Broad-leaved Paperbark	MQU	45L	8 -25 m	5 - 10m		
<i>Tristaniopsis laurina*</i>	Water Gum	TLA	45L	6 - 12m	4 - 6m		
<i>Melicope elleryana*</i>	Pink Euodia	MEL	45L	6 - 10m	3 - 4m		
					TOTAL		
*Fire retardant species to be planted within or near an APZ							

FIRE RETARDANT PLANTING ZONE						
Scientific name	Common name	Type	Pot Size	Density/m²	% Prop	QTY
<i>Austromyrtus dulcis</i>	Midyim Berry	S	Hiko	6	5	
<i>Boronia falcifolia</i>	Wallum Boronia	S	Hiko	6	5	
<i>Dianella caerulea</i>	Flaw Lily	G	Tube	6	40	
<i>Lomandra confertifolia</i>	Lomandra confertifolia	G	Tube	6	40	
<i>Melastoma affine</i>	Blue Tongue	S	Hiko	6	5	
<i>Westringia fruticosa</i>	Coastal Rosemary	S	Hiko	6	5	
				TOTAL	100	

BIO RETENTION PLANTING PLANTING ZONE						
Scientific name	Common name	Type	Pot Size	Density/m²	% Prop	QTY
<i>Baloskion pallens</i>	Bog Rush	G	Hiko	8	11	
<i>Baloskion tetraphyllum subsp. meiotachyum</i>	Plume Rush	G	Hiko	8	11	
<i>Baumea rubiginosa</i>	Slender twig rush	G	Hiko	8	11	
<i>Blechnum indicum</i>	Water Fern	G	Hiko	8	11	
<i>Facinia nodosa</i>	Knobby club-sedge	G	Hiko	8	12	
<i>Gahnia clarkei</i>	Saw-sedge	G	Hiko	8	11	
<i>Imperata cylindrica</i>	Blady grass	G	Hiko	8	11	
<i>Lomandra longifolia</i>	Spiny-headed mat-rush	G	Hiko	8	11	
<i>Schoenus brevifolius</i>	Zig-zag bog rush	G	Hiko	8	11	
				TOTAL	100	
Distribution of plants should in clumps of 5-10 plants of the same species to ensure propagation can readily occur						

TURF					
Scientific name	Common name	G/m2	% Prop	Area	Total kg
<i>Cynodon dactylon</i>	Green Couch	10	100		
Turf to be hydro seeded, confirm g /m2 with manufacturer specification					





Vicki (Kirrae Wurrong/Gunditjmarra); DARROCH, Lee & Treahna (Yorta Yorta, Mutti Mutti and Trawlwoolway)

**SCULPTURE MATERIALS**

Material selection used in indigenous artworks must be hardwearing and zero maintenance.

Natural materials are to be used like wood and stone with complimentary structural elements of steel and concrete.

**LEGEND**

- EXISTING TREE TO BE RETAINED AND PROTECTED
- EUCALYPTUS ROBUSTA* KOALA FEED TREE
- ALLOCASUARINA LITTORALIS* COCKATOO FEED TREE
- EXISTING WF HABITAT
- OFFSET WF HABITAT AREA
- CONSTRUCTED WF BREEDING POND
- BIORETENTION SWALE - NOT MOWN
- WALLAM SAND HEATH PLANTING

- 01 ENTRYWAY SCULPTURE**  
Signifying to user they are within Wallum. Interface the road and parkland / community garden space.
- 02 WAYPOINT SCULPTURE**  
Positioned at beginning of path. creating link with larger sculpture at park, leading people into Wallum.
- 03 FURNITURE SCULPTURE**  
Positioned at beginning of path. Waypoint creating link with larger sculpture at park and theme throughout development.
- 04 GROUND SURFACE SCULPTURE**  
Surface details stamped into concrete could be implemented at locations accompanying sculptures or alone on granitic sand tracks creating points of interest and strengthening visual theme of Wallum.



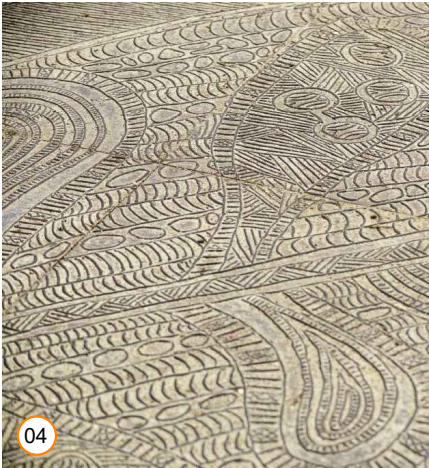
"Totem pole" by Darren Wighton



"Vertical Message" Sticks by Giralang (Carmel Taylor)



"Googar" by Darren Wighton



Vicki (Kirrae Wurrong/Gunditjmarra); DARROCH, Lee & Treahna (Yorta Yorta, Mutti Mutti and Trawlwoolway)

REV.	ISSUE / AMENDMENTS	DATE
A	FOR REVIEW	19.07.21
B	FOR APPROVAL	11.08.21
C	FOR APPROVAL	06.09.21
D	FOR APPROVAL	17.12.21





INTERPRETIVE SIGNAGE

The signage will include information on the indigenous history and ecological values of the site and area, making reference to rehabilitation, habitat creation and fee trees where appropriate. Wallum heath flora and fauna



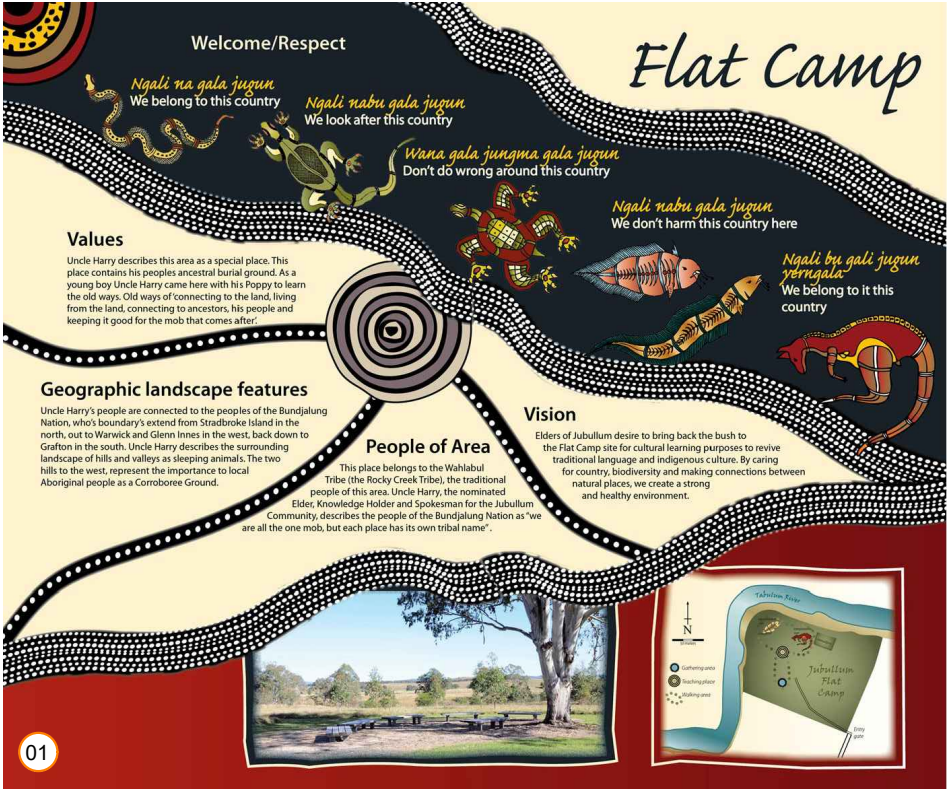
WALLUM HEATH ECOLOGICAL COMMUNITY  
Content to include information on the flora and fauna that existing in this community and rehabilitation works undergone in this riparian zone



CONSTRUCTED WALLUM BRREEDING PONDS  
Positioned beside the constructed breeding ponds, this sign can explain the complex habitat required for the Wallum Froglet ( Crinia tinnula) or Acid Frod. Ground water expression and high PH levels



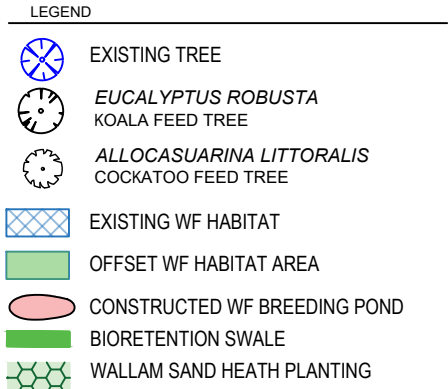
KOALA AND COCKATOO FEED TREES  
Located along the path leading down to Simpson Creek. Sinage to be installed explaining the plantings of *Eucalyptus robusta* for Koalas and *Allocasuarina littoralis* for Glossy Black Cockatoos



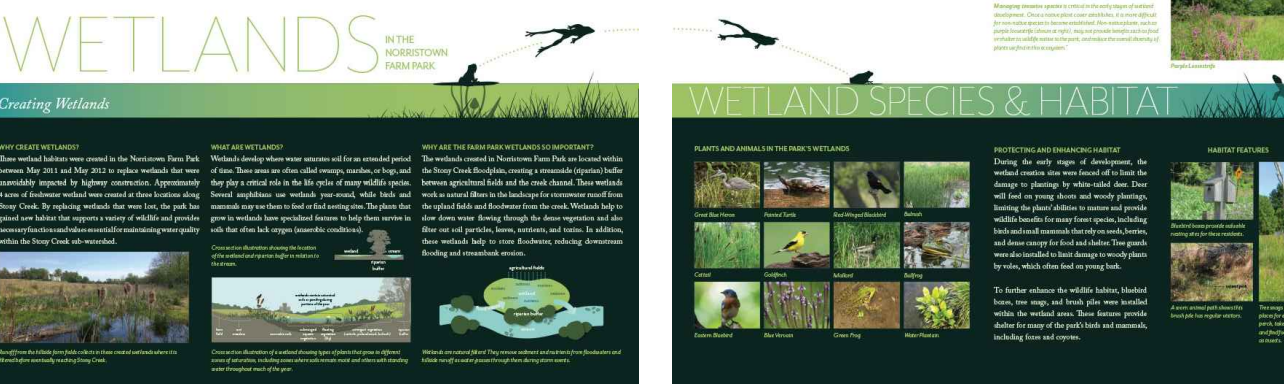
INDIGENOUS HISTORTY  
Interpretive signage for indigenous culture, could include topics like site importance, bush foods of the Wallum heath, proximately to Simpson creek and coast. Consultation with the local Tweed Byron LALC will be required to access knowledge and get approval.



SIGNAGE MATERIALS  
Material selection used in indigenous artworks must be hardwearing and zero maintenance. Natural materials are to be used like wood and stone with complimentary structural elements of steel and concrete.



PRECEDENT SIGN  
The Wallum Sand Heath Ecological Community could be split into. two panels. One describing the physical condition of the site, soil profile and groundwater connectivity, including sections and plans. The second containing a breakdown of flora and fauna and habitat.



REV.	ISSUE / AMENDMENTS	DATE
A	FOR REVIEW	19.07.21
B	FOR APPROVAL	11.08.21
C	FOR APPROVAL	06.09.21
D	FOR APPROVAL	17.12.21

**SIGNAGE NOTE:**  
Final sign locations, content and materials will be developed in detailed design phase. Consultation with council and author cultural authorities will be undertaken in this process.